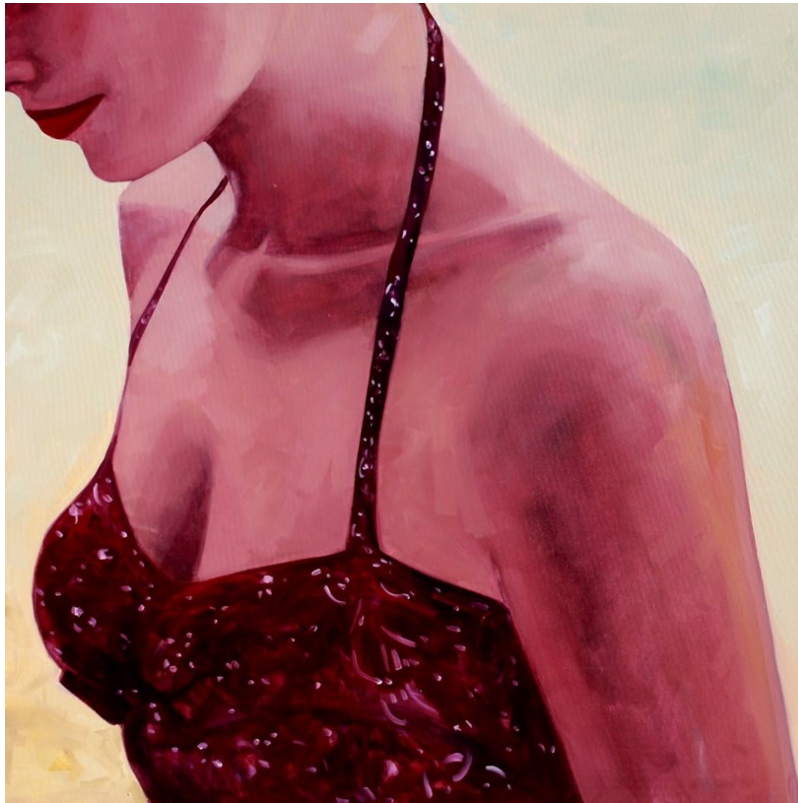


Quidley & Company

Presents

T.S. HARRIS



48 x 48

"Radiant"

\$11,500

In her paintings, Tracey Sylvester Harris presents a dazzling iconic vision of the female form that merges the past with the present. Inspired by found black and white snapshots from the mid-century, her paintings are colorful yet bittersweet, depicting fleeting moments captured almost a lifetime ago. Suspended in time, Harris' stylish and elegant cropped figures put on scarlet lipstick, dream by the pool or sit in contemplation. With the context of their actions removed, the women become mysterious; they are alluring not for their bodies, but for the secrets they hold. Raised by two professional artists, Harris's art career began at an early age. Initially showing interest in her family's gallery and then branching out into other venues, her work has since shown in museums and galleries nationwide and featured in the movie, *The Face of Love*. Harris lives on the central coast of California.

26 MAIN STREET
NANTUCKET, MA 02554
508.228.4300

QUIDLEYANDCO.COM

WHERE TIMELESS BEAUTY AND UNEQUALED SERVICE ENDURE

38 NEWBURY STREET
BOSTON, MA 02116
617.450.4300